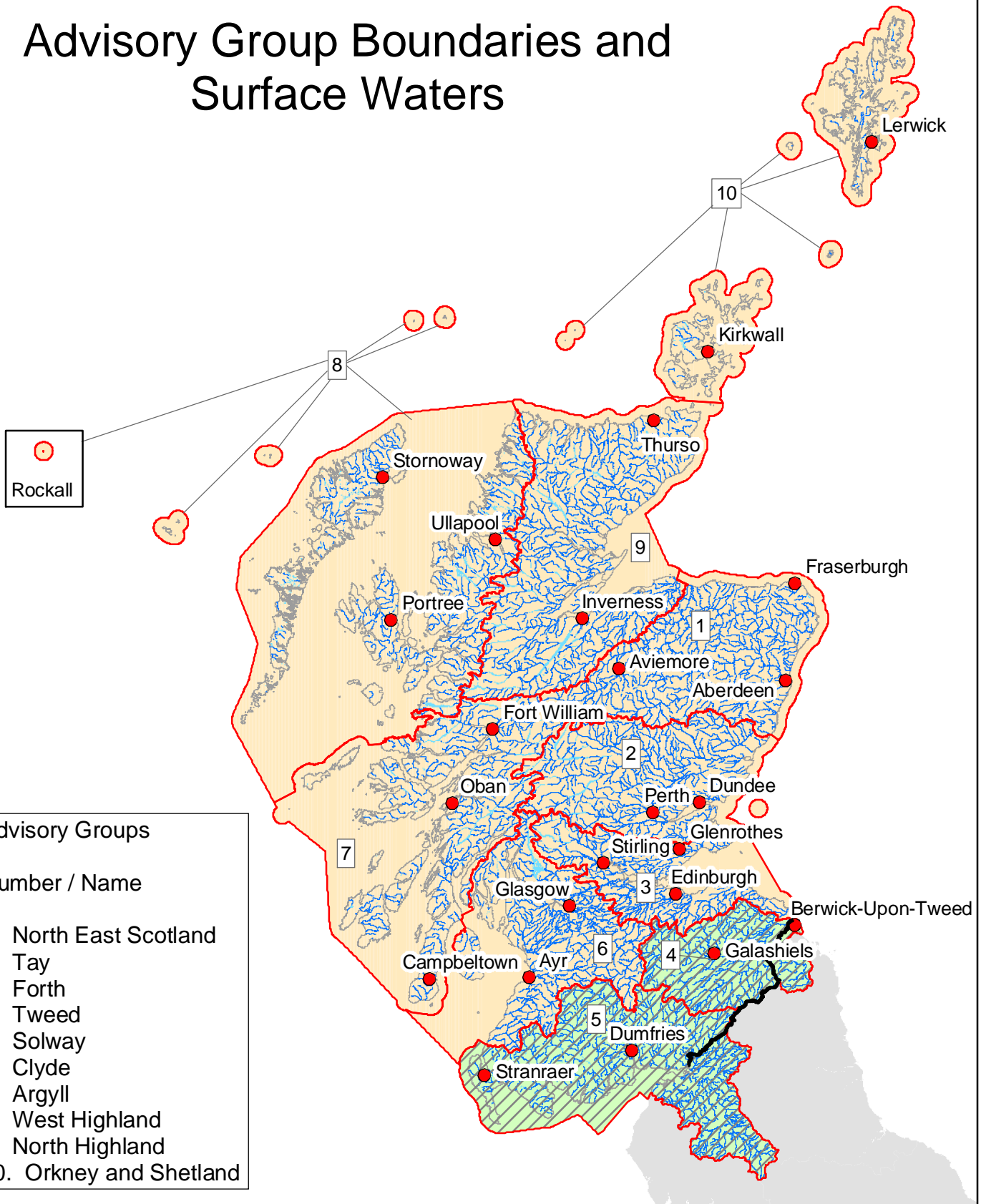


Advisory Group Boundaries and Surface Waters



Advisory Groups

Number / Name

1. North East Scotland
2. Tay
3. Forth
4. Tweed
5. Solway
6. Clyde
7. Argyll
8. West Highland
9. North Highland
10. Orkney and Shetland

1:3,350,000

0 25 50 100
Kilometres

© 2005 Scottish Environment Protection Agency.
Some features of this map are based on digital spatial data licensed from the Centre for Ecology and Hydrology, © CEH. Includes material based upon Ordnance Survey mapping with permission of H.M. Stationery Office, © Crown Copyright. Licence number 100020538.

